

Cumbria RIGS Group

Cumbria RIGS Group is a voluntary geological conservation group working to record and look after important geological sites.



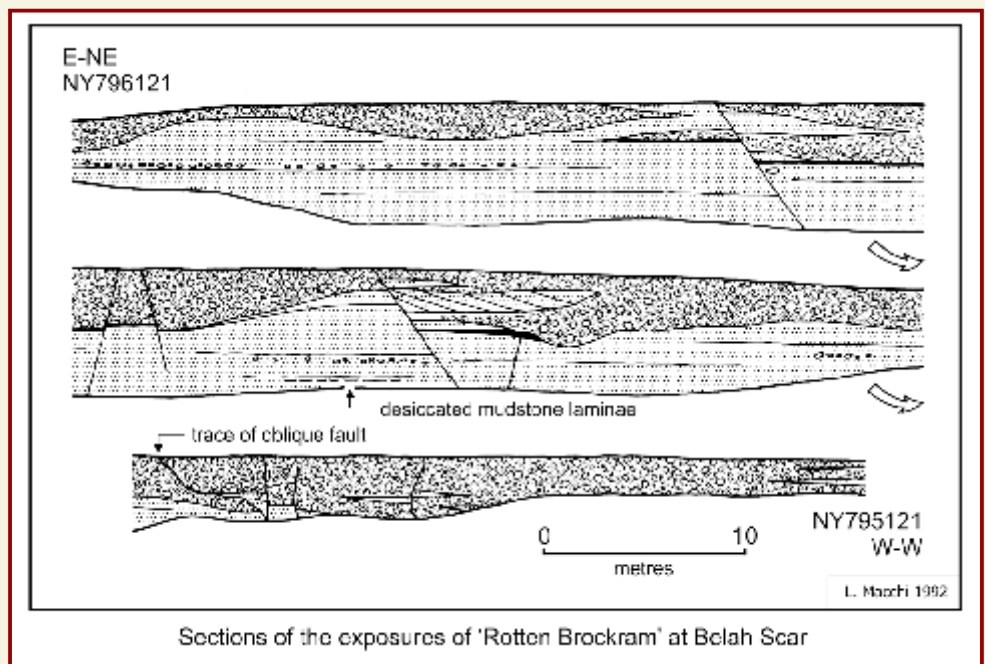
<http://cumbriarigs.co.uk>

BELAH SCAR RIGS



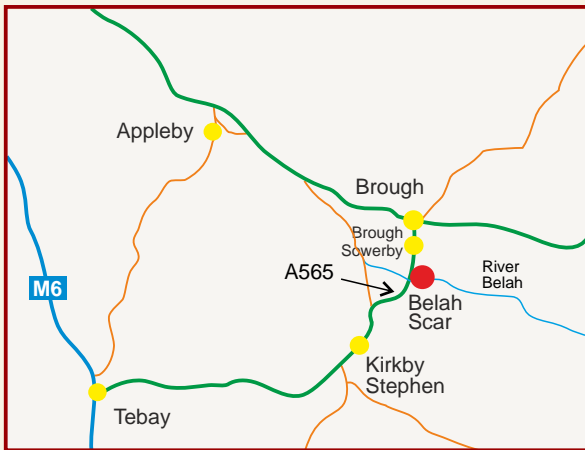
The rocks at Belah Scar are in Penrith Sandstone which are thick inland desert sand dune deposits, and were laid down 260 million years ago in the Permian Period. At this time the Northern England area was 30 degrees north of the equator where the Sahara desert is today.

This classic section in the cliffs of the River Belah shows several cycles of sandstones with basal scours filled with pebbles and gravels which fine-up through sands and silts to thin mud layers at the top of the cycles.





The darker deposit in the centre right of the photograph at Belah Scar is a 'Brockram' which is a breccia bed and is a fan that was deposited by a flash flood that swept down from high ground to the south.



Cars may be parked in the lay-by 600 metres south of Brough Sowerby. A right-of-way provides access to the cliff, which is 200 metres from the lay-by.



A close-up image of Penrith Sandstone which is an aeolian deposit where the 'millet seed' grains display a remarkable degree of rounding.